

2020

迈格码培训学院手册

MAGMAacademy CATALOGUE

MAGMA
ACADEMY
STEPS



TRAININGS



WORKSHOPS



SEMINARS

目录

迈格码培训学院	5
迈格码应用服务	7
迈格码六步法	9
培训课	10
操作培训	12
工艺辅导	14
实战辅导	16
操作培训 II	18
工艺辅导 II	20
升级培训	22
讲习班	24
虚拟试验设计和优化	26
应力，热处理和MAGMALink模块	28
反向优化和“用户结果”	30
研讨会	32
迈格码软件在有色铸造中的深入应用	34
黑色铸件的持续改进与模拟优化	36
压铸件的机械性能及质量管理	38
客户定制课程	40
认证书	42
培训年历	44
地址和联系方式	

Content

MAGMAacademy	6
MAGMA Implementation	8
MAGMA APPROACH	9
Trainings	10
Operation Training	13
Process Coaching	15
On-job Project Coaching	17
Operation Training II	19
Process Coaching II	21
Upgrade Training	23
Workshops	24
Coaching Virtual Design of Experiments and Optimization	27
Coaching MAGMAstress including Heat Treatment and MAGMALink	29
Inverse Optimization and 'User Results'	31
Seminars	32
Foundry Know-How and Simulation Best Practice in Nonferrous Casting	35
Continuous Improvement and Simulation Optimization in Ferrous Casting	37
Quality Control and Management of Mechanical Properties in the HPDC Process	39
Customized Courses	41
User Certification	43
Course Calendar	44
Address & Contact	





迈格码培训学院

迈格码培训学院旨在为迈格码客户提供各种铸造工艺优化的教育课程，并为铸造专家提供一个知识交流的重要平台。

其课程涉及MAGMASOFT®软件培训，模拟技术讲习班以及各类主题研讨会。通过这些课程，软件使用者可以进一步了解如何有效应用铸造工艺模拟—学习如何正确的分析结果，从而降低各类成本，提高铸件质量。

迈格码培训学院不仅对软件的主要使用者提供系统的培训和辅导，甚至对整个铸造行业的相关人员提供丰富的教育资源，从而致力于加强铸造工艺的全面整合。

培训课：全面铸造模拟软件培训课程分为3级：操作培训，工艺辅导和实战辅导。操作培训主要以软件操作为主。工艺辅导和实战辅导将深入到相应模块的铸造工艺知识以及客户项目的实战辅导。此培训及辅导将指导用户如何通过模拟优化工艺参数及设计，掌握模拟方法及影响，分析铸件缺陷，模拟结果等。

讲习班：通过讲习班的交流，可以更加深入了解迈格码模拟。此活动是特为感兴趣的迈格码用户而设的，目的是进一步提高用户的模拟知识、技巧以及分析方法。每个讲习班根据用户具体需求而设定特定主题，以便提供有针对性的模拟技巧来帮助分析铸造问题。

研讨会：是为和铸造领域有接触的所有相关人员而设计的。此课程可以涉及到整个流程：采购>设计>铸造>质量控制>市场>销售>管理层。因此，不仅为了用户，也为了设计人员，管理人员，质保人员和生产人员以及铸造采购商，领导层及决策者等等。

认证书：是认证用户在铸造界有能力使迈格码软件的考核项目，确保用户有能力通过自己的铸造经验及模拟知识，独立的设置、模拟、分析、优化和呈现模拟项目。

我们期待您参加迈格码培训学院的教育课程。
欲知详情，请联系您的客户经理。

Welcome to MAGMAacademy

The MAGMAacademy training center provides various educational offers dedicated to optimization of casting processes or casting designs and is a platform to share knowledge between experts. MAGMAacademy organizes all trainings, ongoing learning classes for customers related to MAGMASOFT®, as well as technical workshops and seminars. During these courses you will extend your knowledge about the efficient use of casting process simulation. You will learn how to interpret results correctly, reduce costs and increase the quality of your part.

MAGMAacademy's mission is to provide educational resources to software users and to aid assist in the integration of casting process simulation throughout your entire organization.

Training: Start with an Operation Training and then take on the specific Process Coaching and On-job Project Coaching. Using practical examples, you will learn about processes and materials with the focus on your application.

Workshop: Deepen your knowledge of MAGMASOFT® in one of our workshops. The workshops are specifically designed for users, who are experienced in working with MAGMASOFT® and want to improve their usage skills. Each workshop covers a particular topic and is designed to offer you assistance in tackling your casting application problems. You will learn how to increase your efficiency by using MAGMASOFT® for various areas!

Seminar: The seminars of MAGMAacademy are aimed at interested professionals and decision-makers who want to learn about the possibilities of simulation or benefits from the results. Apart from basics about specific materials or process-related topics, you will learn the methodical use and implementation of simulation results for casting development, tool design and production optimization.

Certification: A program to certify that the users have the experience and qualified education to demonstrate their capabilities and excel in casting simulation projects.

We look forward to welcoming you at one of our educational offerings in our MAGMAacademy centre in Suzhou.

For further details please contact your MAGMA contact person.



迈格码应用服务

你我一起，奔驰在赛道上 – 为了质量，利润，时间和竞争力！

成功不仅仅是使用模拟。应用迈格码意味着与MAGMASOFT®一起制定新的目标，并共同有效地实现这些目标。

MAGMASOFT®不仅仅是一款软件，它更是一种方法，旨在帮助贵公司优化生产工艺、增强有效沟通和提高盈利能力。迈格码将担任您的“副驾驶员”，为您提供来自迈格码培训学院和应用工程专家的专业支持。

甚至在您正式使用MAGMASOFT®之前，我们就已开始与您共同制定“路线图” – 根据贵公司的实际情况，与您共同探讨如何安全高效地使用MAGMASOFT®。作为客户，您受益于软件使用者的正规培训和认证；受益于全体相关员工通过研讨会得到的教育与提升；更受益于为公司各领域安全实施措施确定共同目标。

无论您是MAGMASOFT®的新客户还是长期用户，我们都会帮您定制专属应用服务！



MAGMA Implementation

Together, we are in a race... for quality, profitability, time and competitiveness!

Success is more than just using simulation. Implementing MAGMA means setting new goals with MAGMASOFT® and achieving them efficiently together.

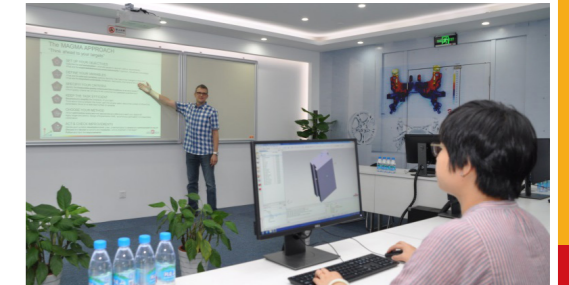
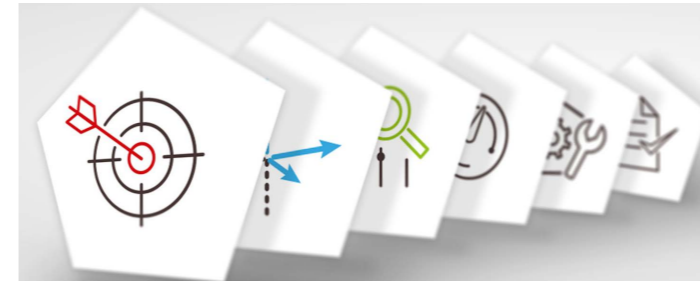
MAGMASOFT® is not just software. It is a methodology for optimizing casting process, part design, communication and profitability in your company. MAGMA will act as a “co-pilot” and offer you a professional support from our MAGMAacademy and our application engineering experts.

Even before you start using the software we will take the time to discuss with you the “roadmap” – the most important factors for an effective and safe use of MAGMASOFT® based on your situation. As a customer, you benefit from the right training and certification of the users, the qualification of all employees through tailor-made seminars, the joint definition of goals to the safe implementation of measures for all areas in the company.

Whether you are a new customer or a long-time user of our software – we have something planned for you!

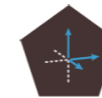
迈格码六步法 MAGMA APPROACH

“你的目标是什么？” “Think ahead to your targets”



设立目标 SET UP YOUR OBJECTIVES

Describe the **current situation**-what are issues to resolve? (status, requirements)
What are the **expected/desired outcomes and benefits**? (optimum, robustness, knowledge)



定义变量 DEFINE YOUR VARIABLES

What are the **relevant variables** (options, flexibility) that need to be changed or analyzed?
What are the **important constraints** (limitations, restrictions) that have to be considered?



明确标准 SPECIFY YOUR CRITERIA

Identify the **measurable quality criteria and their locations** (evaluation areas)?
Which quality criteria can (or have to be) combined and assessed quantitatively?



提高效率 KEEP THE TASK EFFICIENT

Structure and **simplify** the complexity of your task! Think about how to simplify the model, split into smaller tasks, reduce the number of influencing parameters, focus on a restricted number of variables.



选定方法 CHOOSE YOUR METHOD

Which **optimization tools** are most appropriate and effective to reach your objective? Apply single simulations, Design of Experiments (DoE), autonomous optimization or a reasonable combination.



持续提升 ACT & CHECK IMPROVEMENTS

Decide upon suitable **visualization tools** (clear, understandable) to assess and communicate the results!

Discuss and **decide** for actions and **measures** – who is important in that team?
Follow and track the **improvements**!



培训课
TRAININGS





操作培训

条件: 无

级别: 初级

为期: 3天

费用: 1. 2700€+6%VAT (最多3人)

2. 有效维保期内客户可享受折扣价

课程介绍:

操作培训是专为初级水平或零基础的主要使用者而设置的, 内容主要包括迈格码六步法的介绍及应用。针对充型和凝固模拟的操作设定以及虚拟实验设计和优化的初级应用。

课程大纲:

- 模拟介绍及迈格码六步法
- 几何界面—练习 #1
- 网格界面—练习 #2
- 定义界面—练习 #3
- 优化界面—练习 #4
- 模拟界面—练习 #5
- 评估界面—练习 #6
- 结果界面—练习 #7

课程目标:

- 主要使用者会设定并模拟项目, 会对模拟结果进行初步的分析

参加对象:

- 迈格码软件用户

培训地点:

- 迈格码(苏州)软件科技有限公司 培训学院



Operation Training

Prerequisites: None

Course Level: Basic

Duration : 3 days

Course Fee : 1. 2700€+6%VAT(for up to 3 participants)

2. Discounts available for customers having a valid Maintenance and Support Agreement

About the course:

The Operation Training course is intended for beginner level main users. The course curriculum includes the MAGMA APPROACH, the manipulation and set-up of projects which are focused on filling and solidification as well as basic definition of optimizations and their assessment.

Course Overview :

- Introduction of simulation and MAGMA APPROACH
- Geometry Perspective - Lab #1
- Enmeshment Perspective - Lab #2
- Definition Perspective - Lab #3
- Optimization Perspective - Lab #4
- Simulation Perspective - Lab #5
- Assessment Perspective - Lab #6
- Result Perspective - Lab #7

By the end of this session the main user should be able to :

- Set up a project, start a simulation and analyze results

Who should attend:

- MAGMASOFT® users

Location:

- MAGMA Engineering (Suzhou) Co., Ltd MAGMAacademy



工艺辅导

条件: 操作培训

级别: 中级

为期: 3天

费用: 1. 4500€+6%VAT (最多3人)

2. 有效维保期内客户可享受折扣价

课程介绍:

工艺辅导课程是继操作培训之后的必修课程, 其在操作培训之上增加更多完成模拟的有效方法。主要使用者在参加此课程之前必须完成至少3个模拟项目。由于实际铸造现场的具体情况错综复杂, 主要使用者在做模拟时可能会遇到操作培训不能解决的问题, 而工艺辅导课程则为他们提供了一个讨论问题解决方法的机会, 且更多讲解模拟结果的含义, 结合多个结果分析产品缺陷以及高级设定技巧。

课程大纲:

- 审查用户项目
- 高级网格划分技巧
- 深入分析模拟结果
 - 充型
 - 凝固
- 创建模拟报告
- 铸造过程到模拟的应用
- 自主优化分析
- 练习

课程目标:

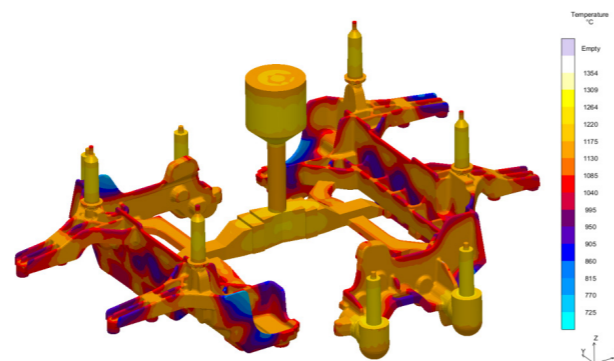
- 主要使用者会设定并模拟项目, 会对模拟结果进行初步的分析

参加对象:

- 迈格码软件用户

培训地点:

- 迈格码(苏州)软件科技有限公司 培训学院



Process Coaching

Prerequisites: Operation Training

Course Level: Intermediate

Duration : 3 days

Course Fee : 1. 4500€+6%VAT(for up to 3 participants)

2. Discounts available for customers having a valid Maintenance and Support Agreement

About the course:

The Process Coaching course is a mandatory follow-up to the Operation Training course and contains additional information necessary for the completion of the Operation Training program. The main users must complete at least 3 simulation projects before they are eligible to attend a Process Coaching. After working with the software in a real-world environment, main users may have encountered situations which were not addressed in the Operation Training course. The Process Coaching course allows main users the opportunity to discuss any problems they may have encountered. The Process Coaching program will provide greater insight into result meaning, combining results for better understanding, discussion of defect identification using results and advanced set-up techniques.

Course Overview :

- Review users' projects
- Advance modelling technique and criterion
- In-depth analysis into simulation results
 - Filling
 - Solidification
- Simulation report guideline
- Process knowledge to simulation applications
- Autonomous optimization analysis
- Labs

By the end of this session the main user should be able to :

- Efficiently set up projects, evaluate simulation results

Who should attend:

- MAGMASOFT® users

Location:

- MAGMA Engineering (Suzhou) Co., Ltd MAGMAacademy



实战辅导

条件: 操作培训和工艺辅导, 并自操作培训起半年内完成

级别: 高级

为期: 3天

费用: 1. 4500€+6%VAT (最多3人)

2. 有效维保期内客户可享有折扣价

课程介绍:

实战辅导课程是由迈格码工程师和主要使用者共同完成客户的一个实际项目。迈格码专家会就结果评估方面给主要使用者提供建议和指导。由于时间关系, 多数项目是要延续至课堂之后继续完成的。

课程大纲:

- 审查用户项目
- 高级网格划分技巧
- 深入分析模拟结果
 - 充型
 - 凝固
- 创建模拟报告
- 铸造过程到模拟的应用
- 自主优化分析
- 练习

课程目标:

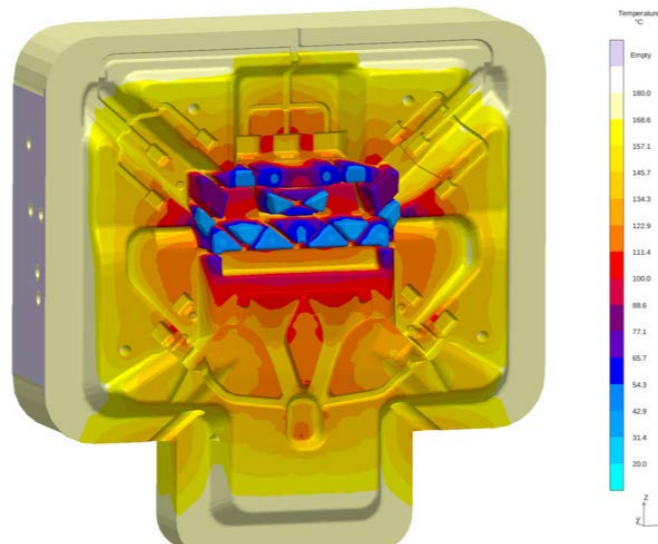
- 主要使用者会
- 解释缺陷的根源
 - 寻求可行的解决方案
 - 彻底实施该方案
 - 创建模拟报告
 - 有效的汇报演示模拟结果

参加对象:

- 迈格码软件用户

培训地点:

- 迈格码(苏州)软件科技有限公司 培训学院
- 用户现场



On-job Project Coaching

Prerequisites: Operation Training and Process Coaching, must be completed within 6 months after attending the Operation Training

Course Level: Advanced

Duration : 3 days

Course Fee : 1. 4500€+6%VAT(for up to 3 participants)

2. Discounts available for customers having a valid Maintenance and Support Agreement

About the course:

The On-job Project Coaching course revolves around a main user's project which will be worked on in class with an experienced MAGMA application engineering expert. This course will help the main users assess the current project status, develop a strategic approach to the problem and be provided with suggested result evaluation techniques. In most cases the scope of the project is beyond what can be completed in three days. Additionally project work which begins in the Process Coaching course may continue after the course days are completed.

Course Overview :

- Review users' projects
- Advance modelling technique & criterion
- In-depth analysis into simulation results
 - Filling
 - Solidification
- Simulation report guideline
- Process knowledge to simulation applications
- Autonomous optimization analysis
- Labs

By the end of this session the main user should be able to :

- Explain the root cause of a problem
- Determine a strategy to find an acceptable solution
- Implement the strategy
- Create simulation report
- Effectively communicate the results to others

Who should attend:

- MAGMASOFT® users

Location:

- MAGMA Engineering (Suzhou) Co., Ltd MAGMAacademy
- On-site



操作培训 II

条件: 1. 与操作培训至少相隔 6 个月
2. 参加对象为同一个公司的第二批新的主要使用者

级别: 初级

为期: 3 天

费用: 免费 (在有效维保期内用户)

课程介绍:

操作培训 II 课程是专为初级水平的第二批新的主要使用者而设置的。受训者一般已从首批 (即现有) 主要使用者处获得一定的软件使用方法。操作培训 II 课程与操作培训课程内容完全一致。此课程开设的目的是为客户培养储备人才。

课程大纲:

- 模拟介绍及迈格码六步法
- 几何界面—练习 #1
- 网格界面—练习 #2
- 定义界面—练习 #3
- 优化界面—练习 #4
- 模拟界面—练习 #5
- 评估界面—练习 #6
- 结果界面—练习 #7

课程目标:

- 主要使用者会设定并模拟项目, 会对模拟结果进行初步的分析

参加对象:

- 迈格码软件用户 (优先)
- 工程师, 设计师, 技术员, 压铸或砂铸的工作人员

培训地点:

- 迈格码 (苏州) 软件科技有限公司 培训学院

Operation Training II

Prerequisites: 1. 6 months after completion of the Operation Training
2. Additional new users from the same company

Course Level: Basic

Duration : 3 days

Course Fee : Included in a valid Maintenance and Support Agreement

About the course:

The Operation Training II course is intended for beginner level main users. The course curriculum includes the MAGMA APPROACH, the manipulation and set-up of projects which are focused on filling and solidification only as well as optimization and assessment usage.

Course Overview :

- Introduction of simulation & MAGMA APPROACH
- Geometry Perspective - Lab #1
- Enmeshment Perspective - Lab #2
- Definition Perspective - Lab #3
- Optimization Perspective - Lab #4
- Simulation Perspective - Lab #5
- Assessment Perspective - Lab #6
- Result Perspective - Lab #7

By the end of this session the main user should be able to :

- Set up a project, start a simulation and analyze results

Who should attend:

- MAGMASOFT® users (Priority)
- Engineers, designers, technicians working in a casting environment or professionals who work with sand mold or die casting process

Location:

- MAGMA Engineering (Suzhou) Co., Ltd MAGMAacademy



工艺辅导 II

条件: 操作培训 II

级别: 中级

为期: 3 天

费用: 免费 (在有效维保期内用户)

课程介绍:

工艺辅导 II 课程是继操作培训 II 之后的必修课程, 其在操作培训 II 之上增加更多完成模拟的有效方法。主要使用者在参加此课程之前必须完成至少 3 个模拟项目。由于实际铸造现场的具体情况错综复杂, 主要使用者在做模拟时可能会遇到操作培训 II 不能解决的问题, 而工艺辅导 II 课程则为他们提供了一个讨论问题解决方法的机会, 且更多讲解模拟结果的含义, 结合多个结果分析产品缺陷以及高级设定技巧。

课程大纲:

- 审查用户项目
- 高级网格划分技巧
- 深入分析模拟结果
 - 充型
 - 凝固
- 创建模拟报告
- 铸造过程到模拟的应用
- 自主优化分析
- 练习

课程目标:

- 主要使用者会设定并模拟项目, 会对模拟结果进行初步的分析

参加对象:

- 迈格码软件用户 (优先)
- 工程师, 设计师, 技术员, 压铸或砂铸的工作人员

培训地点:

- 迈格码 (苏州) 软件科技有限公司 培训学院

Process Coaching II

Prerequisites: Operation Training II

Course Level: Intermediate

Duration : 3 days

Course Fee : Included in a valid Maintenance and Support Agreement

About the course:

The Process Coaching II course is a mandatory follow-up to the Operation Training II course and contains additional information necessary for the completion of the Operation Training II program. The main users must complete at least 3 simulation projects before they are eligible to attend a Process Coaching II. After working with the software in a real-world environment, main users may have encountered situations which were not addressed in the Operation Training II course. The Process Coaching II course allows main users the opportunity to discuss any problems they may have encountered. The Process Coaching II program will provide greater insight into result meaning, combining results for better understanding, discussion of defect identification using results and advanced set-up techniques.

Course Overview :

- Review users' projects
- Advance modelling technique and criterion
- In-depth analysis into simulation results
 - Filling
 - Solidification
- Simulation report guideline
- Process knowledge to simulation applications
- Autonomous optimization analysis
- Labs

By the end of this session the main user should be able to :

- Efficiently set up projects, evaluate simulation results

Who should attend:

- MAGMASOFT® users (Priority)
- Engineers, designers, technicians working in a casting environment or professionals who work with sand mold or die casting process

Location:

- MAGMA Engineering (Suzhou) Co., Ltd MAGMAacademy



升级培训

条件: 操作培训或操作培训 II
级别: 初级
为期: 1-2 天
费用: 免费 (在有效维保期内用户)

课程介绍:

新版升级培训仅在迈格码软件版本有升级时举办。该课程涵盖所有新增功能的介绍和使用,借助相关实例的练习,主要使用者能够轻松快速的掌握新功能的使用,平稳过渡到新版本。对于使用 MAGMASOFT® 多个模块的主要使用者而言,该课程将结合讲解各模块功能。

课程大纲:

- MAGMASOFT® 新功能

课程目标:

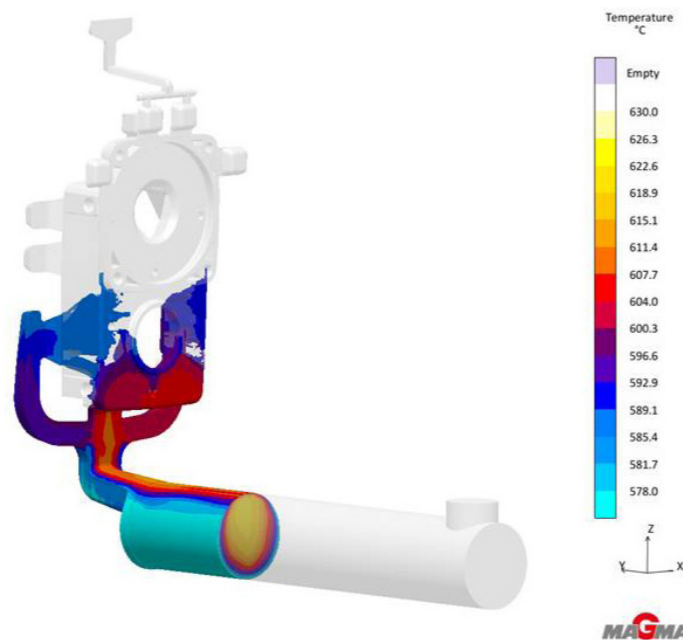
- 主要使用者会使用 MAGMASOFT® 新功能

参加对象:

- 迈格码软件用户

培训地点:

- 迈格码(苏州)软件科技有限公司 培训学院



Upgrade Training

Prerequisites: Operation Training or Operation Training II
Course Level: Basic
Duration : 1-2 days
Course Fee : Included in a valid Maintenance and Support Agreement

About the course:

The Upgrade Training is offered when a major software version change or upgrade occurs. Main users who attend an Upgrade Training will find it easier and faster to learn the new options and features available, facilitating a smooth transition to the new version. In cases where main users are utilizing multiple modules of MAGMASOFT®, efforts will be made to combine module functionality in one session.

Course Overview :

- New major features of MAGMASOFT®

By the end of this session the main user should be able to :

- Understand and use the newly introduced features of MAGMASOFT®

Who should attend:

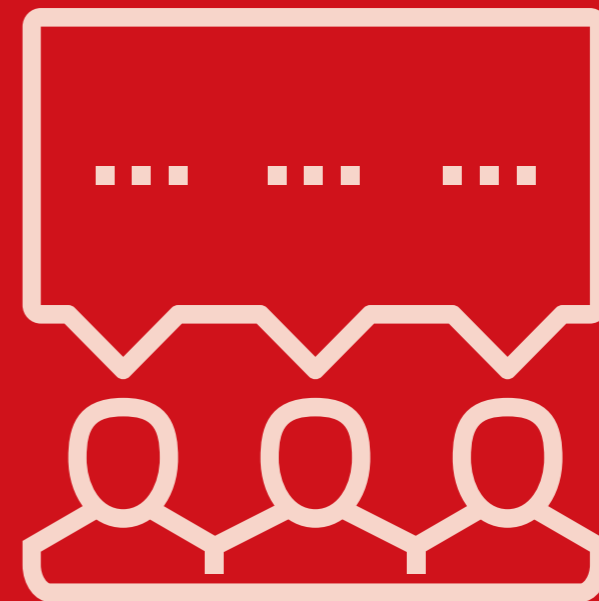
- MAGMASOFT® users

Location:

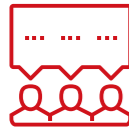
- MAGMA Engineering (Suzhou) Co., Ltd MAGMAacademy



MAGMASOFT®
autonomous engineering



讲习班
WORKSHOPS



虚拟试验设计和优化

条件: 操作培训或操作培训 II
 级别: 中级
 为期: 2 天
 费用: 1. 3000RMB+6%VAT/人
 2. 免费 (在有效维保期内用户)

课程介绍:

该讲习班主要讲解如何在重力砂型/高压/金属型/低压等各个铸造工艺中使用优化功能, 以使用户能将 MAGMASOFT® 这一最新功能应用到实际生产中。参加者将学习虚拟试验设计和优化操作的基础方法。

课程大纲:

- 几何体交换
- 参数优化
- 工艺优化
- 评估分析

课程目标:

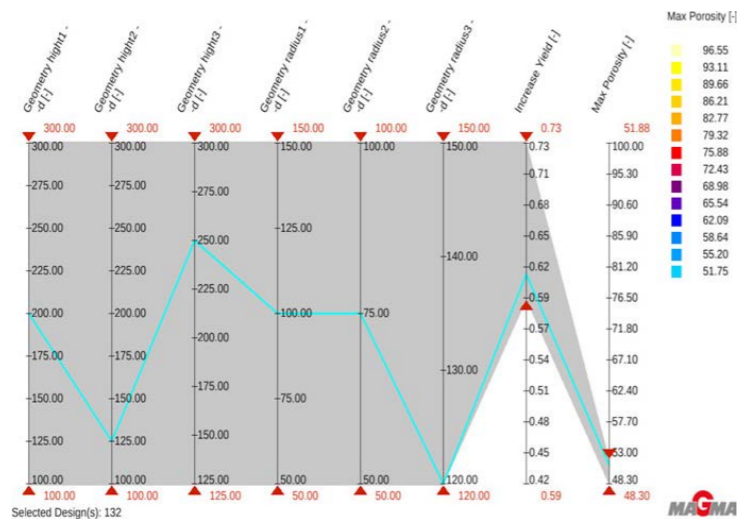
- 参加者会
- 基础设定
 - 模拟优化项目
 - 分析优化评估结果

参加对象:

- 迈格码软件用户 (优先)
- 工程师, 设计师, 技术员, 压铸或砂铸的工作人员

培训地点:

迈格码 (苏州) 软件科技有限公司 培训学院



Coaching Virtual Design of Experiments and Optimization

Prerequisites: Operation Training or Operation Training II
 Course Level: Intermediate
 Duration : 2 days
 Course Fee : 1. 3000RMB+6%VAT/participant
 2. Included in a valid Maintenance and Support Agreement

About the course:

This workshop introduces you to the extended capabilities for the optimization of the gravity sand casting/high pressure die casting/die casting/low pressure die casting processes (depending on which class you attended). It is meant to help you integrate the use of the optimization features into your daily work with MAGMASOFT®. You will learn how to work with virtual design of experiments and optimization and also the underlying methodology.

Course Overview :

- Geometry exchange
- Parametric Optimization
- Process Optimization
- Assessment Analysis

By the end of this session the participant should be able to :

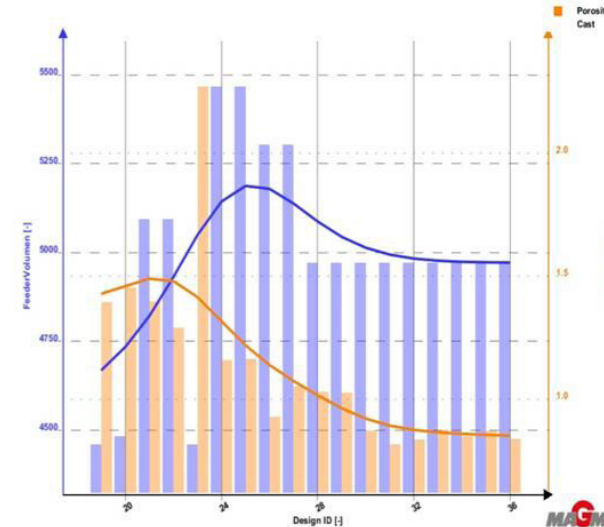
- Set-up
- Start an optimization run
- Assessment of optimizations

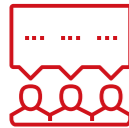
Who should attend:

- MAGMASOFT® users (Priority)
- Engineers, designers, technicians working in a casting environment or professional who work with sand mold or die casting process

Location:

MAGMA Engineering (Suzhou) Co., Ltd
 MAGMAacademy





应力，热处理和 MAGMAlink 模块

条件：应力培训

级别：中级

为期：2 天

费用：1. 3000RMB+6%VAT/ 人

2. 免费（在有效维保期内用户）

课程介绍：

本次讲习班将根据用户的使用水平，深入浅出的讲解应力，热处理以及 Link 模块的基础理论知识，同时会讲解并演练迈格码软件的操作设定以及实际应用。

课程大纲：

- 应力应变理论
- 热处理解析
- MAGMAlink 模块讲解
- 软件设定练习

课程目标：

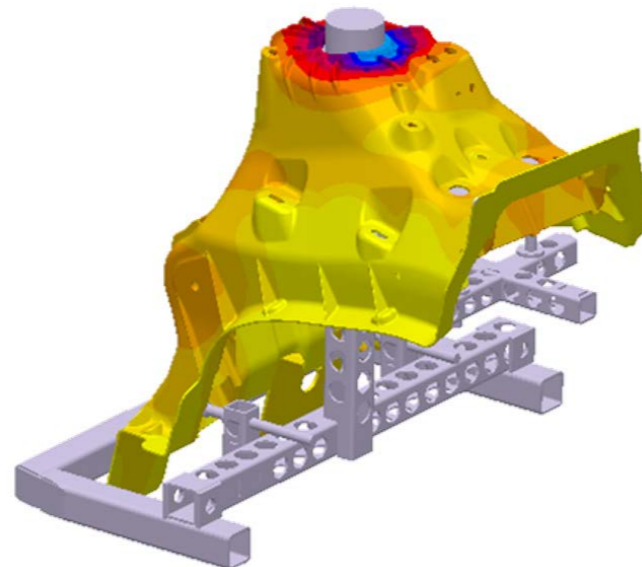
- 参加者能提高对应力，热处理和 MAGMAlink 模块的理论理解以及软件的设定和实际应用水平

参加对象：

- 想要更新或加强应力模拟知识的迈格码软件用户

培训地点：

- 迈格码（苏州）软件科技有限公司 培训学院



Coaching MAGMAstress including Heat Treatment and MAGMAlink

Prerequisites: MAGMAstress training

Course Level: Intermediate

Duration : 2 days

Course Fee : 1. 3000RMB+6%VAT/participant

2. Included in a valid Maintenance and Support Agreement

About the course:

This workshop will cover the basic theoretical knowledge needed to set up and evaluate stress and heat treatment simulations. Both will also be exercised using MAGMASOFT®. Additionally, the simulation result export via the MAGMAlink module will be practiced. The workshop pace will be adapted to the participants' skill level.

Course Overview :

- Stress and strain theory
- Heat treatment and result analysis
- Data export via MAGMAlink
- Set-up practice

By the end of this session the participant should be able to :

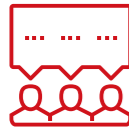
- Have an improved understanding of stress and heat treatment simulations, be able to set these up as well as to export simulations results via MAGMAlink

Who should attend:

- MAGMASOFT® users who want to refresh or deepen their knowledge about stress simulation

Location:

- MAGMA Engineering (Suzhou) Co., Ltd MAGMAacademy



反向优化和“用户结果”

- 条件:** 操作培训 (II) 和工艺辅导
级别: 高级
为期: 2 天
费用: 1. 3000RMB+6%VAT/人
 2. 免费 (在有效维保期内用户)

课程介绍:

在这个讲习班中, 您将学习如何使用反向优化的基础知识, 并将练习使用用户特定的结果 (“用户结果”) 来模拟和优化迈格码软件。通过利用反向优化, 您将根据在铸造厂获得的测量结果, 计算出如何更好地将模拟模型的边界条件调整到实际工艺条件中, 从而使模拟结果更适合于实际工艺。

课程大纲:

- 反向优化的设置讲解
- 反向优化的实际案例
- “用户结果”的基本原理
- “用户结果”的标准应用

课程目标:

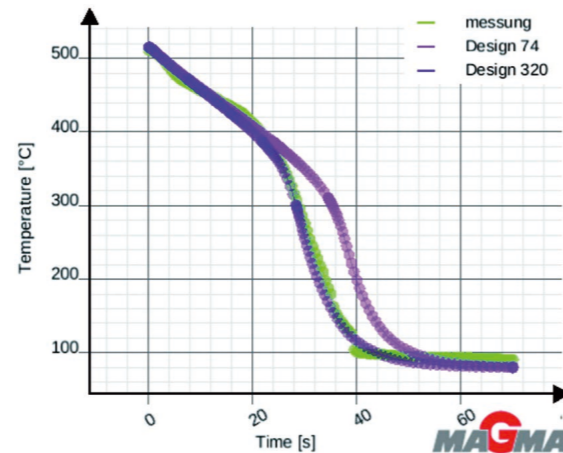
- 参加者能
- 反向优化的设定和实际使用
 - “用户结果”的设定和实际应用

参加对象:

- 希望加深对反向优化和“用户结果”知识的理解, 并想将其运用到自己实际工艺中的迈格码软件用户

培训地点:

- 迈格码 (苏州) 软件科技有限公司 培训学院



Inverse Optimization and 'User Results'

- Prerequisites:** Operation Training (II) and Process Coaching
Course Level: Advanced
Duration : 2 days
Course Fee : 1. 3000RMB+6%VAT/participant
 2. Included in a valid Maintenance and Support Agreement

About the course:

In this workshop, you will learn the basics of how to use inverse optimization and you will practice using user-specific results ('User Results') to simulate and optimize with MAGMASOFT®. By using inverse optimization, you will calculate how to better adjust the boundary conditions of the simulation model to the actual process conditions based on measurements obtained in the foundry. This allows you to better adapt the simulation results to the actual process.

Course Overview :

- Set up an inverse optimization
- Possible use cases for inverse optimization
- Fundamental aspects of 'User Results'
- Standardization of 'User Results' in your daily workflows

By the end of this session the participant should be able to :

- Set-up inverse optimization and 'User Results'
- Adapt the simulation results to the actual process

Who should attend:

- MAGMASOFT® users who would like to deepen their knowledge of inverse optimization and 'user results' and use the simulation even more extensively through their own criteria and specific process and boundary conditions

Location:

- MAGMA Engineering (Suzhou) Co., Ltd MAGMAacademy

PorAir Scalar3D	ModifiedAirPressure Scalar3D
ModifiedLee Scalar3D	SDAS_AISI6Cu4 Scalar3D
ModifiedNiyama Scalar3D	SDAS_AISI7Mg Scalar3D

(Example of 'User Results')



研讨会
SEMINARS

研讨会



迈格码软件在有色铸造中的深入应用

条件: 无
级别: 高级
为期: 2天
模块: 重力有色
费用: 1. 5000RMB+6%VAT/人
2. 免费(在有效维保期内用户)

课程介绍:

本此研讨会专注于软件功能的实际应用, 结合迈格码六步法讲解虚拟试验设计和优化以帮助提高铸件质量。通过应力理论的讲解并结合迈格码软件模拟结果对铸件变形, 开裂等缺陷进行分析。其中重点会介绍如何开发客户质量判据标准的方法论。

课程大纲:

- 客户质量标准的定制方法
- 残余应力分析及应用
- 虚拟试验设计和优化
- 实际案例分析

课程目标:

参加者能

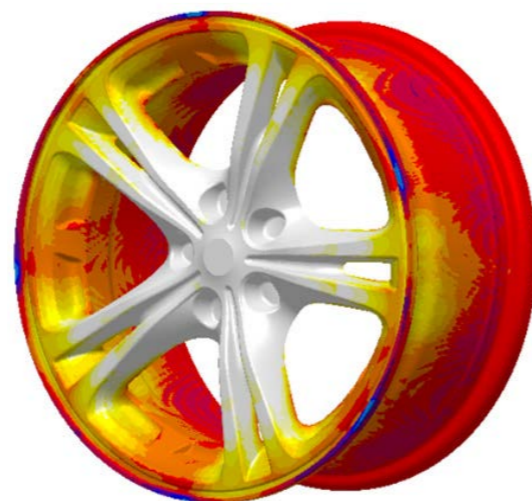
- 加深对迈格码软件模拟结果的理解, 明确并深层次的理解铸件缺陷
- 学会客户质量标准的定制方法

参加对象:

- 迈格码软件用户
- 工程师, 设计师, 技术员, 有色铸造铸的工作人员

培训地点:

- 广州



Foundry Know-How and Simulation Best Practice in Nonferrous Casting

Prerequisites: None
Course Level: Advanced
Duration : 2 days
Version : Gravity Nonferrous
Course Fee : 1. 5000RMB+6%VAT/participant
2. Included in a valid Maintenance and Support Agreement

About the course:

This seminar covers the interpretation and analysis of MAGMASOFT® simulation results. The influence of process variables on casting quality is explained in detail and the root cause of casting defect formation is confirmed through analysis of case studies. It is worth mentioning that this seminar also addresses core making process simulations, including result interpretation and case study analysis of casting defects caused by the sand core defects.

Course Overview :

- Methodology to develop customized quality criteria
- Residual stress in iron and steel castings
- Methodology of Virtual Design of Experiments and Optimization
- Case studies

By the end of this session the participant should be able to :

- Have a deep understanding of MAGMASOFT® simulation results and the casting defects
- Learn how to develop customized quality criteria

Who should attend:

- MAGMASOFT® users
- Engineers, designers, technicians working in a casting environment or professionals who work with nonferrous casting process

Location:

- Guangzhou



黑色铸件的持续改进与模拟优化

- 条件: 无
 级别: 高级
 为期: 2天
 模块: 黑色砂铸
 费用: 1. 5000RMB+6%VAT/人
 2. 免费(在有效维保期内用户)

课程介绍:

本次研讨会关注于如何优化和提高铸铁和铸钢件的质量。将分析典型的铸造缺陷,包括应力理论基础及相关缺陷。同时会讲解砂芯质量的优化,从而解决由于砂芯缺陷引起的铸件缺陷。其中重点会介绍如何开发客户质量判据标准的方法论。

课程大纲:

- 客户质量标准的定制方法
- 残余应力分析及应用
- 制芯工艺讲解
- 案例分析

课程目标:

参加者能

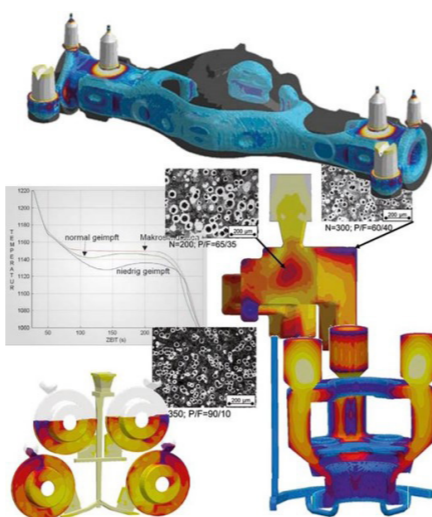
- 加深对 MAGMASOFT® 模拟结果的理解,明确并深层次的理解铸件缺陷
- 学会客户质量标准的定制方法

参加对象:

- 迈格码软件用户
- 工程师,设计师,技术员,黑色砂铸的工作人员

培训地点:

- 迈格码(苏州)软件科技有限公司 培训学院



Continuous Improvement and Simulation Optimization in Ferrous Casting

- Prerequisites: None
 Course Level: Advanced
 Duration : 2 days
 Version : Ferrous
 Course Fee : 1. 5000RMB+6%VAT/participant
 2. Included in a valid Maintenance and Support Agreement

About the course:

This seminar focuses on how to optimize and improve the quality of cast iron and steel castings. Typical cast defects, including stress related defects, will be analyzed. The necessary theoretical background will be explained. The analysis of the sand core quality will support the participants to prevent molding material related casting defects. A methodology on how to develop customized quality criteria will be discussed.

Course Overview :

- Methodology to develop customized quality criteria
- Residual stress in iron and steel castings
- Molding material related casting defects
- Case studies

By the end of this session the participant should be able to :

- Have a deep understanding of MAGMASOFT® simulation results and the casting defects
- Learn how to develop customized quality criteria

Who should attend:

- MAGMASOFT® users
- Engineers, designers, technicians working in a casting environment or professionals who work with sand mold casting process

Location:

- MAGMA Engineering (Suzhou) Co., Ltd MAGMAacademy



压铸件的机械性能及质量管理

条件: 无
级别: 高级
为期: 2天
模块: 高压压铸
费用: 1. 5000RMB+6%VAT/人
2. 免费(在有效维保期内用户)

课程介绍:

本次研讨会将专注于压铸件的全过程模拟分析及优化, 包含产品设计, 模具设计, 铸造工艺等, 以及充型, 凝固, 应力等相关结果。重点会对结构件的机械性能进行分析, 同时, 提供如何开发客户质量判据标准的方法论。

课程大纲:

- 客户质量标准的定制方法
- 结构件性能管理
- 残余应力分析与应用
- 案例分析

课程目标:

参加者能

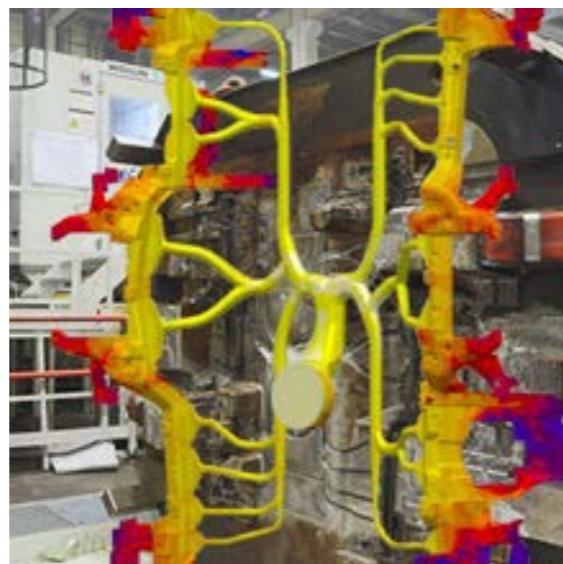
- 加深对结构件机械性能的理解
- 学会客户质量标准的定制方法

参加对象:

- 迈格码软件用户
- 工程师, 设计师, 技术员, 压铸的工作人员

培训地点:

- 迈格码(苏州)软件科技有限公司 培训学院



Quality Control and Management of Mechanical Properties in the HPDC Process

Prerequisites: None
Course Level: Advanced
Duration : 2 days
Version : High Pressure Die Casting
Course Fee : 1. 5000RMB+6%VAT/participant
2. Included in a valid Maintenance and Support Agreement

About the course:

This seminar will focus on simulation setup, analysis, and optimization of the HPDC simulation process. It will cover the casting, product, and mold design, as well as filling, solidification, and stress results of MAGMASOFT®. The management of mechanical properties of structural parts will be another key aspect which is covered. Finally, the development of customized quality criteria will be presented and discussed.

Course Overview :

- Methodology to develop customized quality criteria
- Management of structural parts' properties
- Residual stress in iron and steel castings
- Case studies

By the end of this session the participant should be able to :

- Evaluate typical stress results from casting and heat treatment-especially in case of structural parts
- Develop custom quality criteria

Who should attend:

- MAGMASOFT® users
- Engineers, designers, technicians working in a casting environment or professionals who work with high pressure die casting process

Location:

- MAGMA Engineering (Suzhou) Co., Ltd MAGMAacademy



客户定制课程 为贵公司量身定做的专有技术

最好的新知识和技能传授可以通过一个专门为贵公司设计的培训、辅导或研讨会来实现。我们的专业知识和专业组织以及贵司员工的积极交流是活动成功的有力保障。通过整合公司的所有相关部门，贵司可以实现更高效的沟通，并受益于由此产生的协同效应。让您的团队精诚合作，节省时间和成本，共同面对各项挑战！

根据您的需求，我们可以定制一个新的课程，并为您的员工持续提升制定合适的计划。我们迈格码培训学院将与您密切合作，建立实际案例课程，以便可以立即应用到实际工作生产中。

据调查结果显示，在参加定制课程后，其客户业绩、工作绩效、学习效率、投资回报率等均得到显著提高。

我们很乐意为您提供满足贵司需求的各项定制活动。

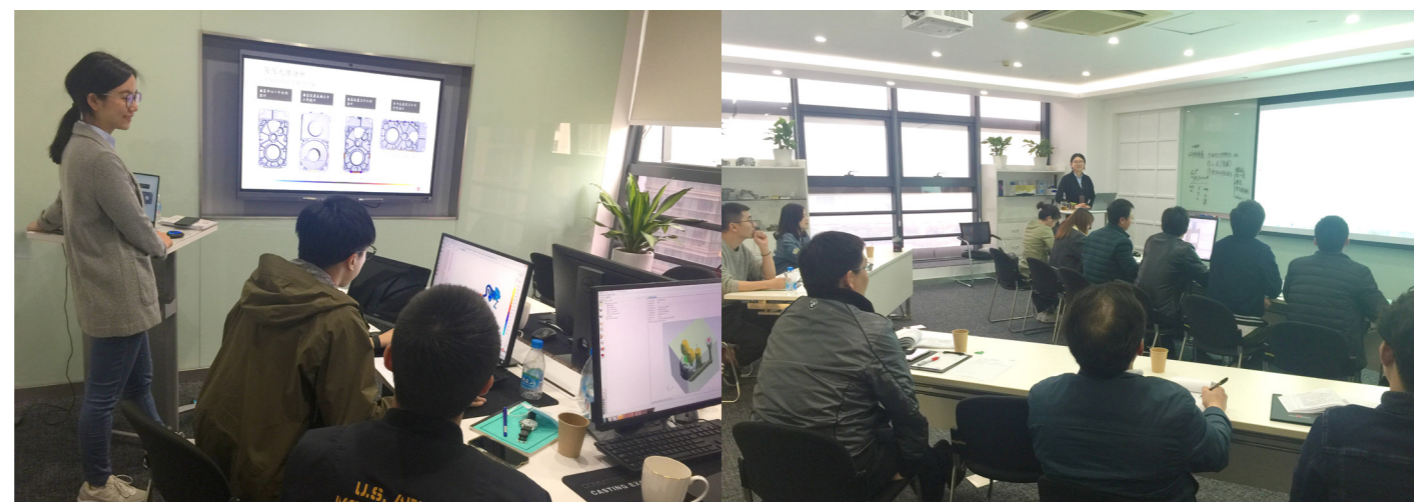
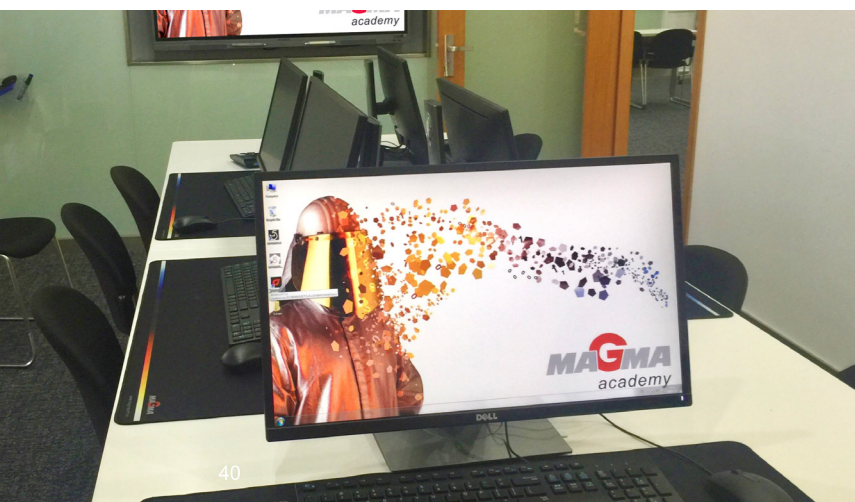
Tailor-Made Know-How for Your Company

The best possible transfer of new knowledge and skills can be achieved through a course tailored to your company. The exchange between your employees, the know-how of our experts and a professional organization guarantee you a successful course. By integrating all relevant departments of your company, you achieve more efficient communication among each other and use the synergy effects that arise. Give your team the chance to master individual challenges together and save time and costs!

Based on your demands, we customize a new course to your needs and create just the right program for your staffs' continuous improvement. Our MAGMAacademy team will work closely with you to create courses that provide practical examples which can be immediately applied to the participant's actual work environment.

Participant survey results showed that performance outcomes, job performance, learning effectiveness, ROI, etc. improved significantly upon delivery of customized courses.

We would be pleased to offer you courses that are individually tailored to your needs, also as an on-site event.



认证书 — 用户认证项目 (CUP)

Certificate

兹证明 / THIS IS TO CONFIRM THAT

公司 / Company :

业已成功掌握铸造模拟软件操作和实际应用, 经审核达到 CUP 的要求, 特授予此证书。

(HAS SUCCESSFULLY MASTERED, UNDER THE CERTIFIED USER PROGRAM (CUP), THE OPERATION AND APPLICATION OF CASTING SIMULATION PROGRAM).

MAGMASOFT
autonomous engineering

模块 (Of Modules) :

证书编号 (CUP Number) :

发证日期 (Issue Date) :

Sunny Dou
MAGMAacademy Manager

Mathieu Weber
General Manager

迈格码 (苏州) 软件科技有限公司
MAGMA Engineering (Suzhou) Co., Ltd
苏州市工业园区苏惠路 98 号国信大厦 15 层 1515 室
Phone: +86 512 6272 5820, Fax: +86 512 6272 5825
www.magma-software.com

MAGMA
Committed to Casting Excellence

符合条件的主要使用者成功完成认证项目并合理呈现报告, 方可通过迈格码用户认证考核。该认证考核按 MAGMASOFT® 模块分类, 用户可以参加多个模块的考核。

按原则, 考生必须在迈格码年度用户大会上做最终的报告呈现, 内容包括解释考核项目范围, 策略, 结果以及最终解决方案。一般情况下, 我们也允许在内部会议或用户现场做最终的报告呈现。

用户认证项目 (CUP) 证书将在迈格码年度用户大会上颁发。该证书不仅是对通过考核的主要使用者的肯定, 同时更是其所在公司有效使用 MAGMASOFT® 软件的资质证明。

通过认证的用户能够:

- 评估项目范围
- 寻求项目目标和策略
- 获取启动项目所需的工艺和质量数据
- 有效设置和评估同一项目的多个版本
- 与生产的相关部门交流模拟结果和解决方案

考核条件:

- 操作培训、工艺辅导和实战辅导
或操作培训 II 和工艺辅导 II
- 软件使用满一年
- 在有效维保期内

考核活动实施期:

- 6 月至 11 月

考核为期:

- 1.5 天

考核地点:

- 迈格码 (苏州) 软件科技有限公司 培训学院

Certification — Certified User Program, CUP

The 'MAGMA Certification of User' status is achieved by completing all three levels of MAGMASOFT® main user training and coaching, the successful completion of a certification project and presentation of a report. Users will be certified only for the modules of MAGMASOFT® which they use during their certification project work and therefore may wish to pursue multiple certification awards.

They must present a final report at our annual user meeting explaining the project scope, strategy, findings and eventual solution to a group of their peers. In some cases, we may allow the final report presentation to occur during an internal meeting or at customer's site.

Upon successful completion of this process, MAGMA will provide a certification to the users during our annual user group meeting.

This certification will also serve as notification that the organization employs users who can effectively apply that tool.

Certified Users will be able to:

- Assess the scope of a project
- Develop goal(s) and strategy for project work
- Acquire process and quality data needed to begin project work
- Efficiently set-up and evaluate multiple versions within a project
- Communicate simulation results and findings among all areas of their organization

Prerequisite:

- Operation Training, Process Coaching and On-job Project Coaching or Operation Training II and Process Coaching II
- Min.1 year of MAGMASOFT® usage
- Users with valid Maintenance and Support Agreement

Program Open Period:

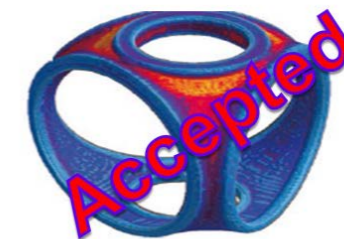
- June–Nov

Duration:

- 1.5 days

Location:

- MAGMA Engineering (Suzhou) Co., Ltd MAGMAacademy



2020 年培训学院年历
MAGMAcademy Calendar 2020

月份 Month	周 Week	培训课 Training						讲习班 Workshop	研讨会 Seminar
		操作培训 (II) Operation Training (II)			工艺辅导 (II) Process Coaching (II)				
		Ferrous	HPDC	Nonferrous	Ferrous	HPDC	Nonferrous		
一月 Jan.	1								
	2								
	3								
	4								
	5								
二月 Feb.	6								
	7	11~13							
	8		18~20						
三月 Mar.	9			25~27					
	10				3~5				
	11					10~12			
	12						17~19		
四月 Apr.	13						26~27		
	14	3/31~4/2							
	15								
五月 May.	16		14~16						
	17						23~24		
	18				27~29				
六月 Jun.	19								
	20								
	21					19~21			
	22						26~28		
七月 Jul.	23	2~4							
	24		9~11						
	25							18~19 有色研讨会 NF	
	26								

2020 年培训学院年历
MAGMAcademy Calendar 2020

月份 Month	周 Week	培训课 Training						讲习班 Workshop	研讨会 Seminar
		操作培训 (II) Operation Training (II)			工艺辅导 (II) Process Coaching (II)				
		Ferrous	HPDC	Nonferrous	Ferrous	HPDC	Nonferrous		
七月 Jul.	27			6/30~7/2					
	28				7~9				
	29								
	30					21~23			
	31						28~30		
八月 Aug.	32	4~6							
	33		11~13						
	34			18~20					
	35							27~28 黑色研讨会 Fe	
九月 Sept.	36				1~3				
	37					8~10			
	38						15~17		
	39							24~25 压铸研讨会 HPDC	
十月 Oct.	40								
	41								
	42	13~15							
	43		20~22						
十一月 Nov.	44						29~30		
	45								
	46			10~12					
	47				17~19				
十二月 Dec.	48					24~26			
	49								
	50	8~10							
	51		15~17						
	52			22~24					

迈格码（苏州）软件科技有限公司

地址：苏州市工业园区苏惠路98号国检大厦15层1515室

邮编：215021

联系人：培训经理 豆子春

电话：+86 512 6272 8319

邮箱：s.dou@magmasoft.cn

MAGMA Engineering (Suzhou) Co., Ltd

Room 1515 CIQ Tower

No 98 Suhui Road, Suzhou Industrial Park

Jiangsu Province, China 215021

Contact: MAGMAacademy Manager Sunny Dou

Tel: +86 512 6272 8319

Email: s.dou@magmasoft.cn

